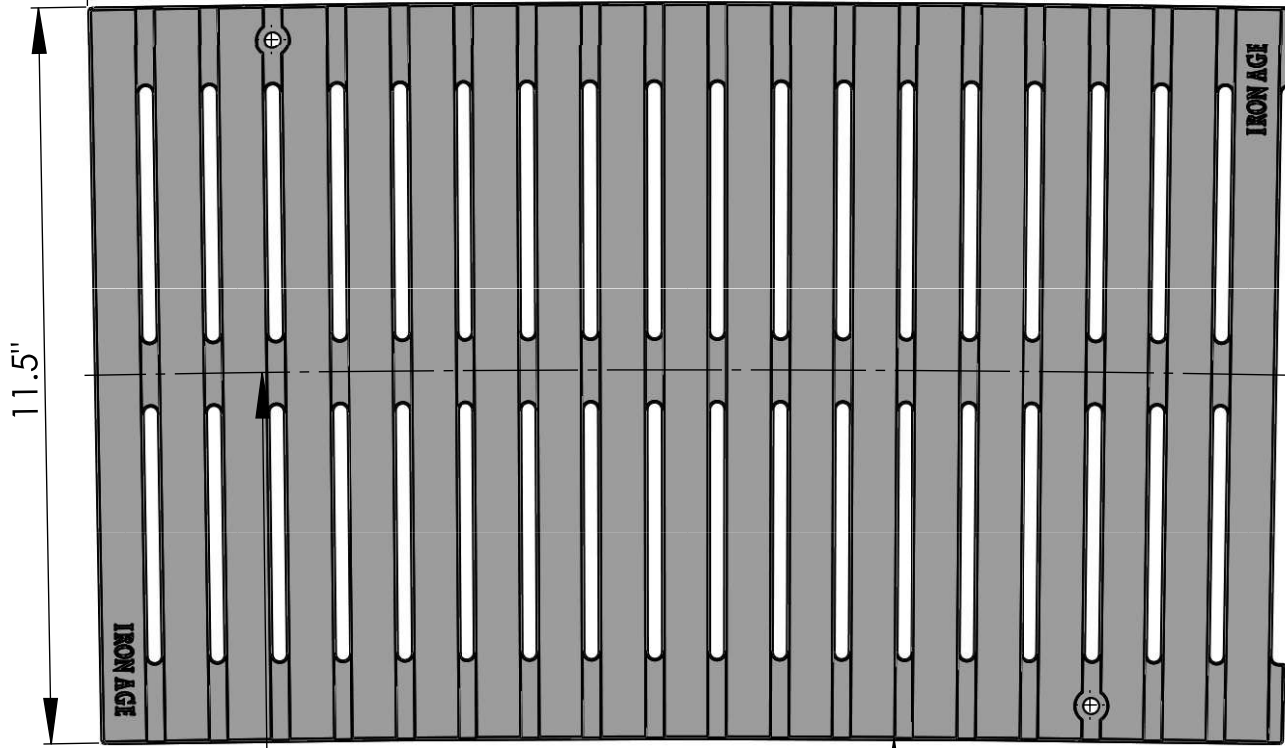


Top
Scale 1:3

18.873

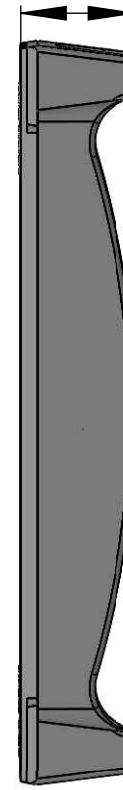


11.5"

CLR44'-7.5"

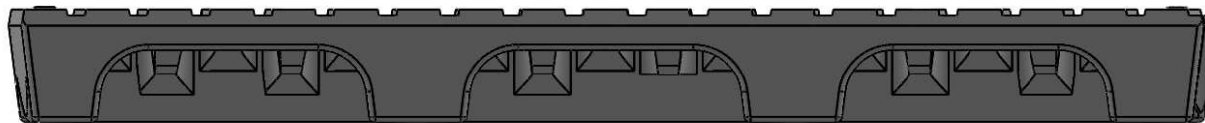
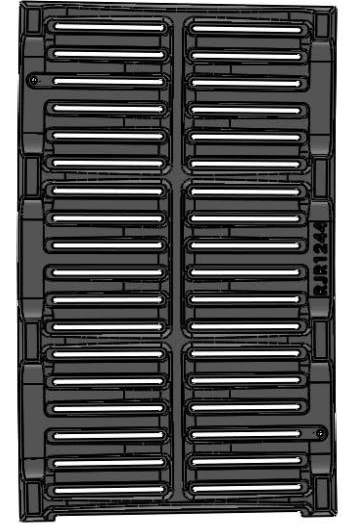
Inside Radius 44'-1.750"

1.763" Overall Height

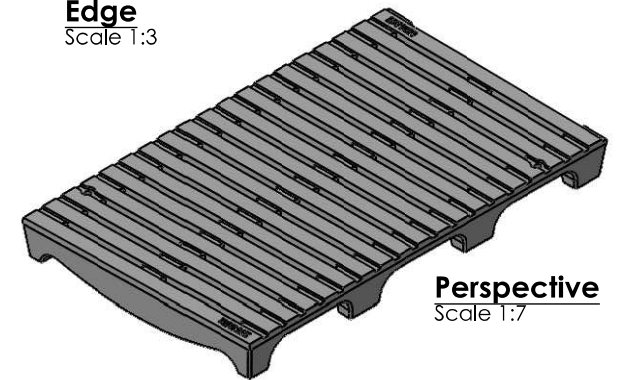


Edge
Scale 1:3

Back
Scale 1:7



Side
Scale 1:3



Perspective
Scale 1:7

IRON AGE 2104 SW 152nd St. #4 TEL 206.276.0925
 DESIGNS Burien, WA 98166 FAX 206.257.0318
 www.ironagedesigns.com

Regular Joe 12" Heavy Duty Heel-Proof
Trench Grate, 44'-8" C.L.R.

Drawn by: JH
Date: 09/23/13
Scale: NTS

DWG. NO. JOE.I.12x44CLRHD_Alum

NOTES:

1. Material: cast iron
2. Finish: Raw
3. Edge Thickness: 1³/₄"
4. Heelproof; No openings greater than: 1/4"
5. Due to casting inconsistencies all dimensions are nominal
6. Weight: approx. 30lbs

© 2013 Iron Age Designs